

承認書

APPROVAL SHEET

CUSTOMER: MAP ELECTRONICS CO., LTD

CUSTOMER MODEL NO.: MEGWX-2102SAXX-920

DESCRIPTION Waterproof Replacement Antenna

REV.: 04

DATE 2016/3/10

Customer Approval	
-------------------	--

Index.

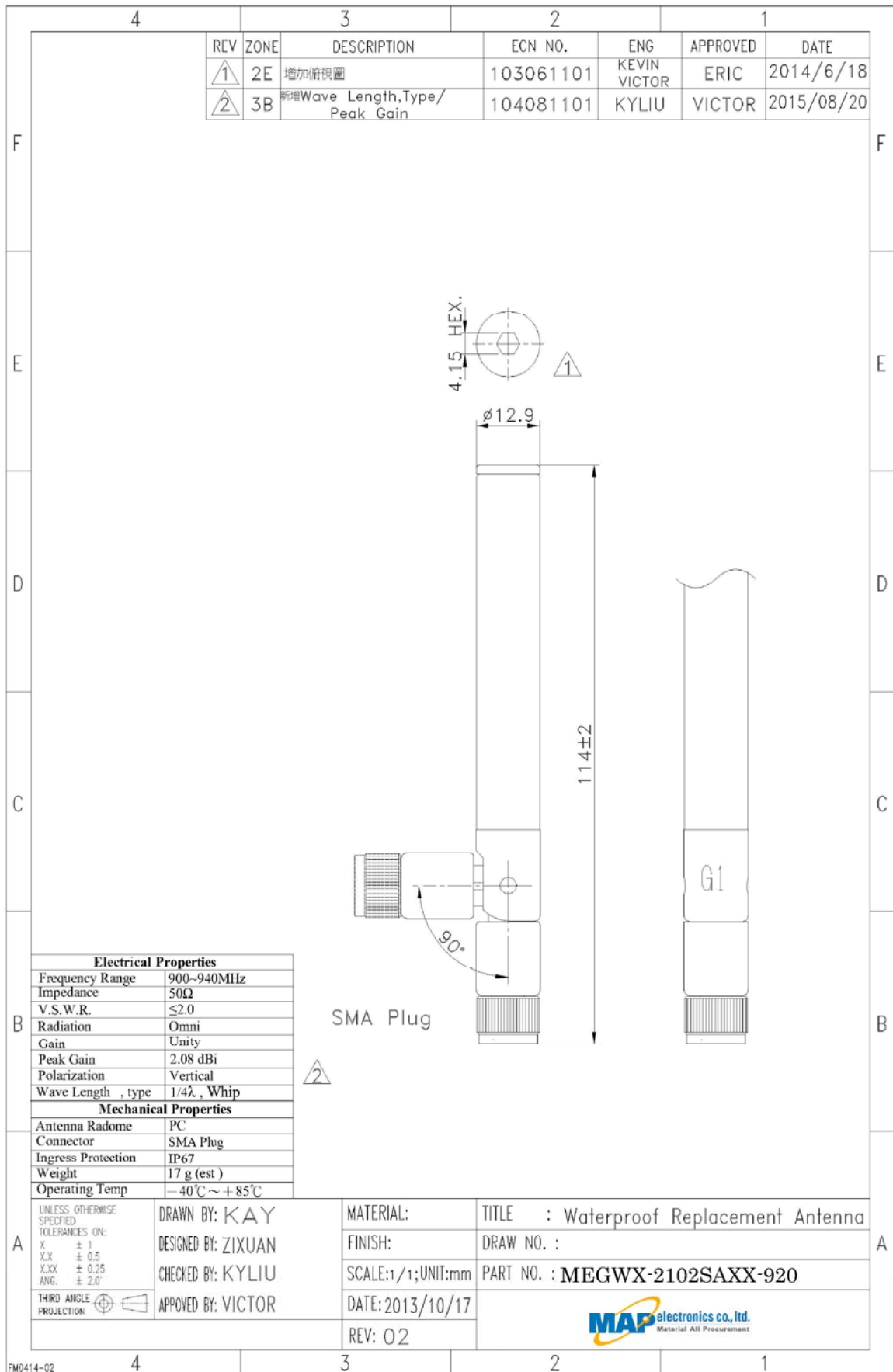
Item

1. Specification	2
• Drawing	2
• Connector	3
• Cable	4
.....	
2. Test report	5
• Electrical test	5
• Pattern test	6
.....	
3. Packing	7
• PE Bag	7
• Carton	8
.....	

Modification History:

Rev.	Date	Content
00	2013/10/17	
01	2014/6/18	增加俯視圖
02	2015/8/19	新增 Wave Length,Type/Peak Gain
03	2015/9/7	2D Patten Test Instrument · Peak Gain值表
04	2016/3/10	增加包裝說明



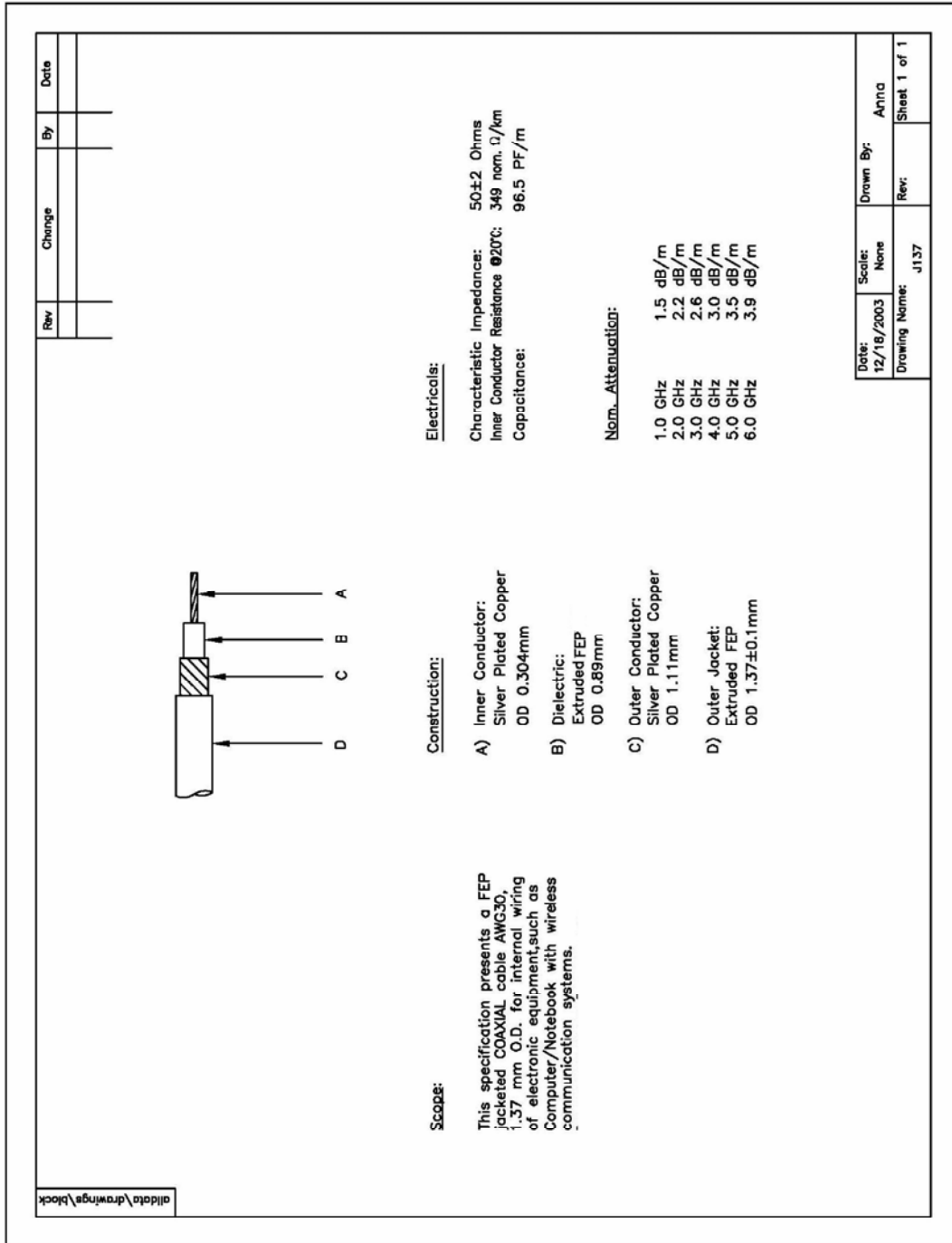


Connector**SMA**

Specification Data	1) Impedance	50 ohm
	2) Frequency Range	0~6GHz
	3) V.S.W.R.	≤ 1.5
	4) Working Voltage	≤ 250 Vrms
	5) Dielectric Withstanding	≤ 670 Vrms
	6) Voltage Insulation Resistance	≥ 2000 Mega ohm
	7) Contact Resistance	Center contact: 3.0 Milliohms (Max.) Outer contact: 2.0 Milliohms (Max.)
	8) Recommended coupling nut torque	4.0~8.8 in. lbs (0.45~0.99Nm)
	9) Coupling nut retention force	≥ 50 lbs (222N)
	10) Contact captivation force	≥ 5 lbs (22.2N)
	11) Durability (mating)	≥ 500 cycles

Environmental Data	1) Operating Temperature	$-65^{\circ}\text{C} \sim +165^{\circ}\text{C}$
	2) Thermal Shock	MIL-STD-202,Method 107, Condition E
	3) Corrosion	MIL-STD-202,Method 101, Condition E
	4) Shock	MIL-STD-202,Method 213, Condition I
	5) Vibration	MIL-STD-202,Method 204, Condition I
	6) Moisture Resistance	MIL-STD-202,Method 106

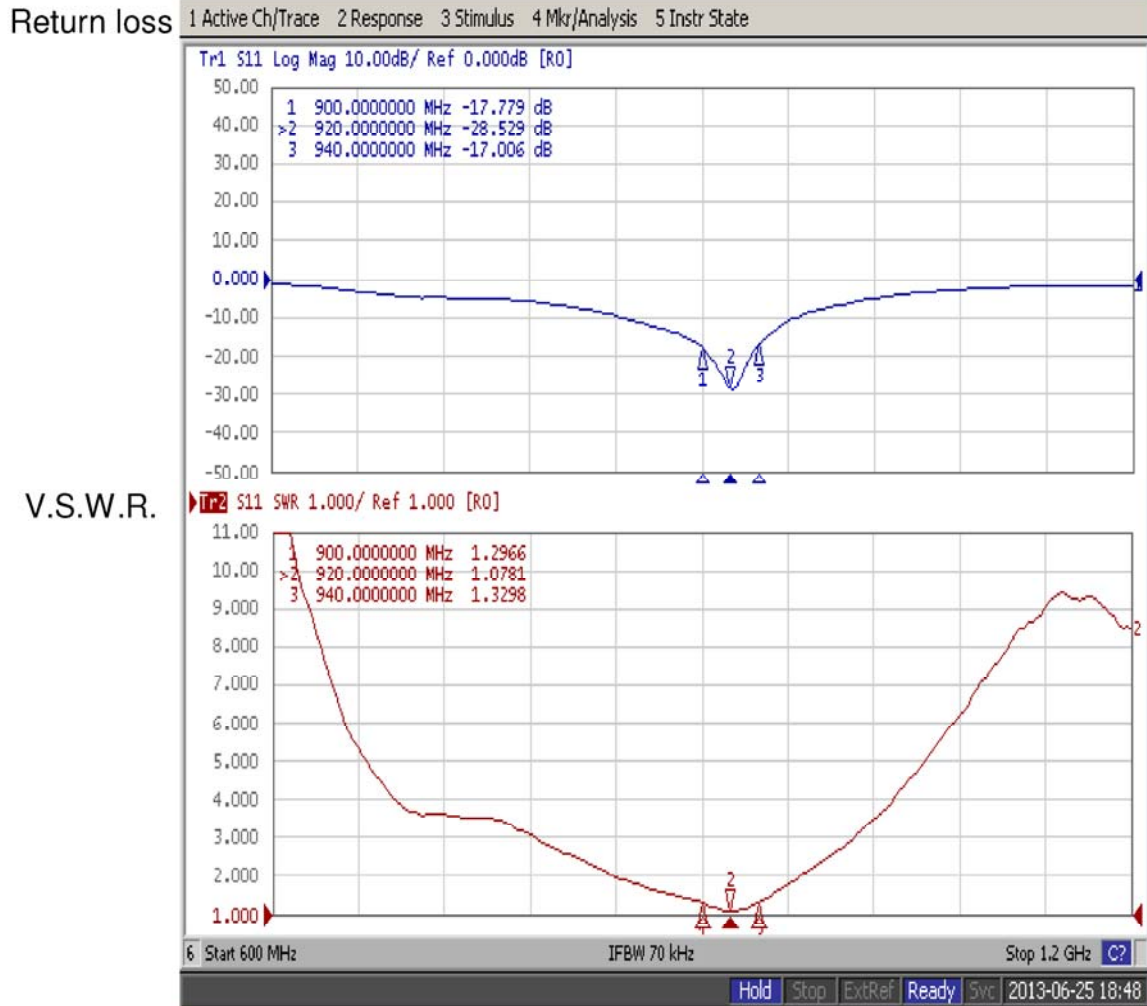
Material Specifications	Material Data	Material
	1) Body	Brass
	2) Contact	Brass
	3) Insulator	Teflon or Delrin

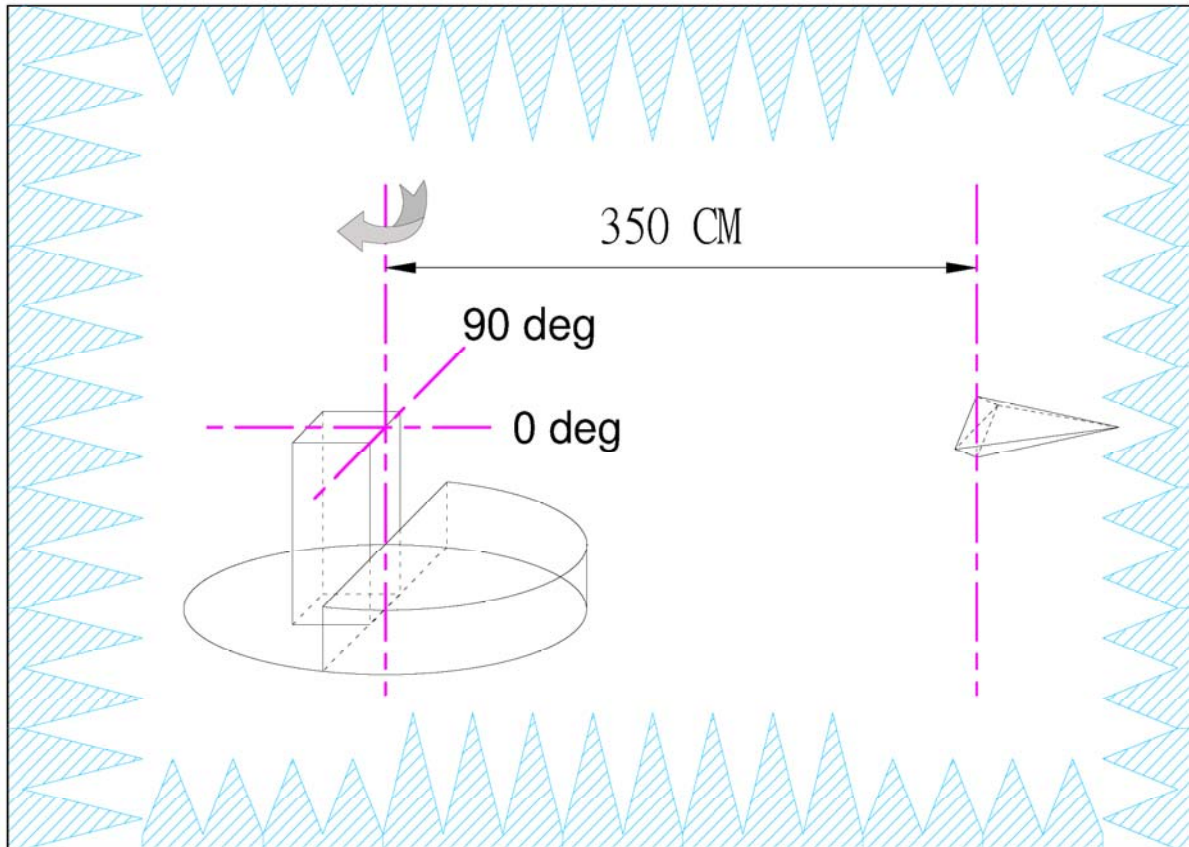


Model. MEGWX-2102SAXX-920

Test Report

Return loss/V.S.W.R





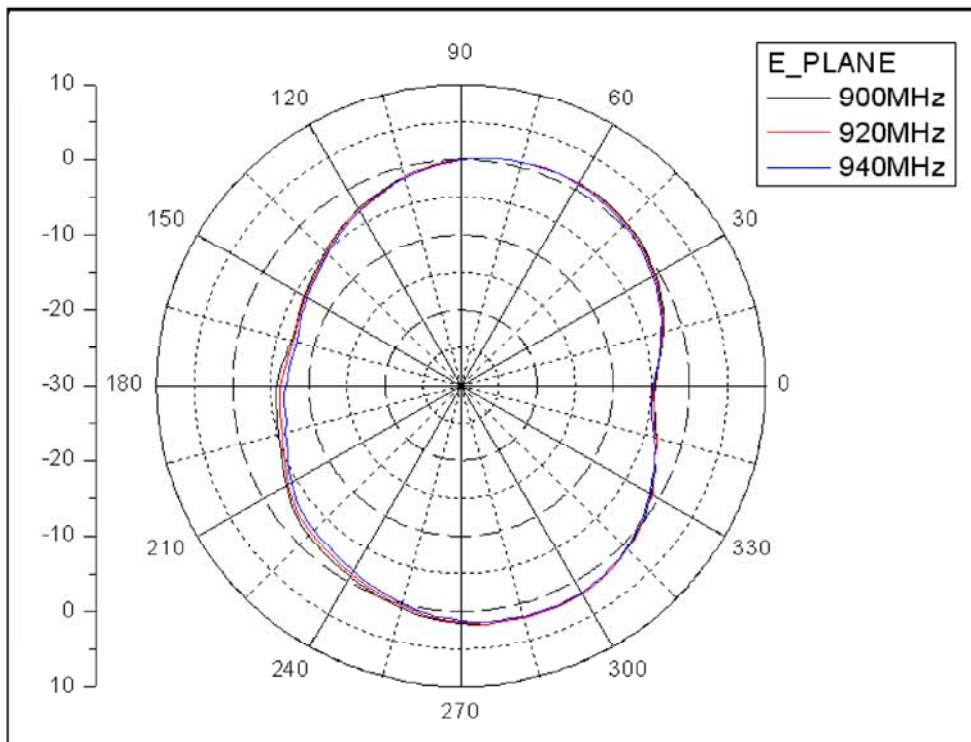
Test Equipment

Anechoic chamber: 100MHz~6GHz 8*6*6m (※ 1m Quiet zone at 800MHz)

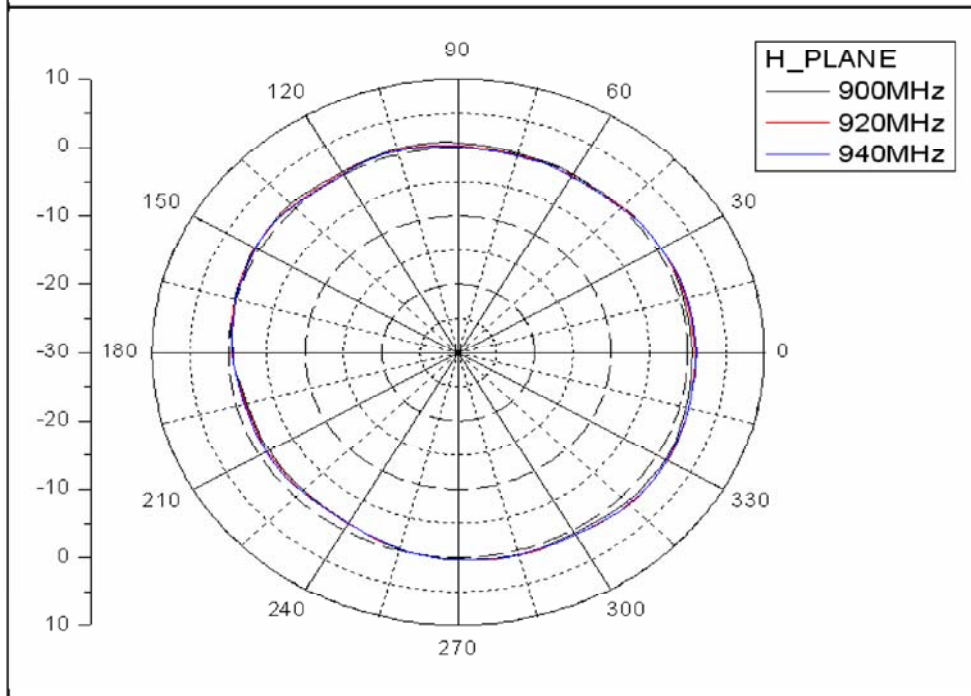
Source Antenna: ETS-3164 Dual Polarized Horn

Network Analyzer: Agilent E5071B 100kHz~8.5GHz

E-plane



H-plane

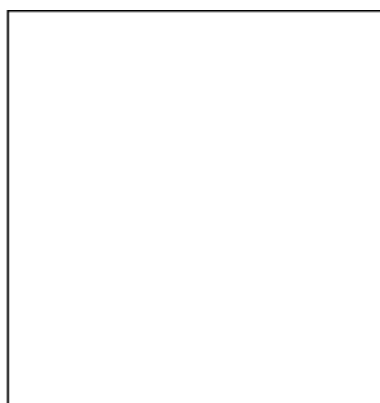


Frequency	900	920	940
H-plane	1.17	2.08	0.94
E-plane	0.74	1.82	1.08



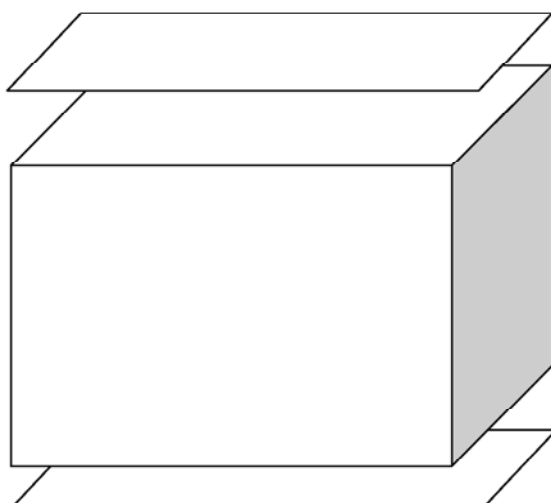
1

1PCS ANT./1 PE
PE size 5*20 cm



2

50PCS ANT./1 PE
PE size 28*45 cm



3

500PCS ANT./1 Bubble Partition
/2PCS
Carton size 320*250*230 mm
Bubble Partition size 310*250 mm